



(THE FUTURE OF
FINANCE IS OPEN

Fusion Knowledge Services

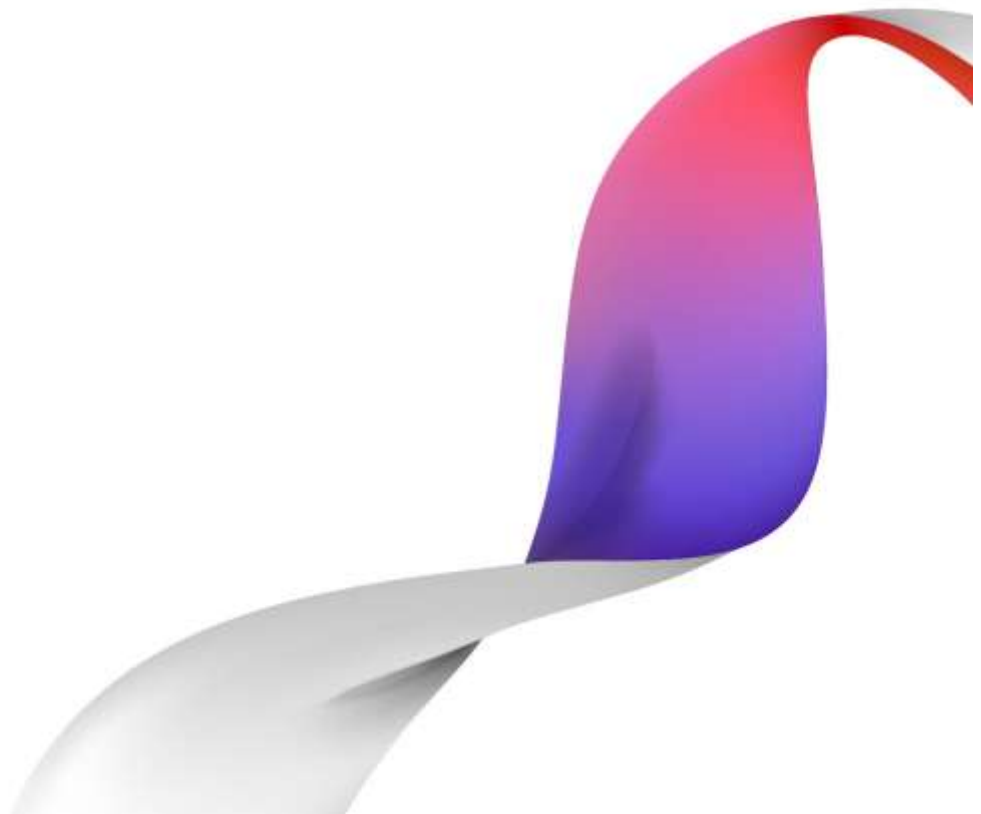
Fusion Global PAYplus Functional Training Agenda



CONTENTS

Fusion Global PAYplus Functional Training Agenda

3



Fusion Global PAYplus Functional Training Agenda

Fusion Global PAYplus Functional		
Duration: 7 Day(s)		
Aim	<p>By the end of this training program, the attendees will be familiar with GPP on a functional level. The knowledge obtained will include:</p> <ul style="list-style-type: none"> understanding of the System Vs Business entities and Reference Data; understanding of the Access Control Mechanism (Users and Permissions); ability to create new Profiles and modify existing ones; understanding of GPP Rule Mechanism (Rule Condition, Rule Action and Rule Attachment); creation of new rules; ability to create alerts; understanding of the Single Payment Workflow understanding of the different GPP Services; and ability to create Periodical Tasks – SOD/ EOD Tasks (Manual and scheduled). 	
Pre-requisites	<p>Pre-Requisite Knowledge/Skills:</p> <ul style="list-style-type: none"> Not Applicable 	
Day	Audience	Module/Topics
1	<ul style="list-style-type: none"> Project Implementation teams Operations & Technical Support Bank administrators who are appointed to manage the parameters of the system at the bank. Users on the client side of Fusion Global PAYplus who are appointed to deal with the day to day processing via Fusion Global PAYplus 	<ul style="list-style-type: none"> Introduction to GPP - Brief Introduction to GPP 4.6 - Key Features Introduction to SWIFT - Common SWIFT messages, formats and fields Introduction to ISO20022 - Common ISO messages, formats and fields SOA overview - An overview of the Service Oriented Architecture Presentation Tier User Interface - GPP Look and Feel, and Navigation Message Search and Advance Filter functions Message attributes - Basic Logical fields definition and usage
2		<ul style="list-style-type: none"> Users and Permissions - GPP usage and set up required for bank's access control procedures and mechanisms Reference Data Office Hierarchy - Key static data set up, such as Parties, Accounts, Currencies, Local office Maintaining the System - Periodical tasks and Uploads Hands on Session - User Admin
3		<ul style="list-style-type: none"> Rule Engine - Rule creation and attachment; Base condition, Function usage Hand on Session - Static Data High Value Single Payment Workflow - Step by step flow of Single Payment Processing (High Value) Debit Side Identification - GPP functionality for identification of the debit party and debit account
4		<ul style="list-style-type: none"> PI and SN processing - Incoming Direct & Cover Senders Credit Line Credit Side Identification - Identification of the credit party and credit account Method of Payment - MOP identification related rules and profile; MOP selection, validation Hand on Session - Rules

5	<ul style="list-style-type: none"> • Bank Routing - Standard settlement instructions for various banks; correspondent banks • Fees - Fees related rules and profile set up • Advising and Notifications - Supported mechanisms for advising and notifications to downstream systems • Hands on Session - Manual creation of payment, Fees
6	<ul style="list-style-type: none"> • FX Processing - FX related rules and profile set up • Override STP - Override STP related rules and profile set up • Duplicate check mechanism - GPP Duplicate Check Mechanism • Non-Accounting Messages - N-Message Processing flow • Hands on Session - Override STP
7	<ul style="list-style-type: none"> • Mass Payment Overview - Mass payment Business Overview. • Credit transfer flow • Course Review - Review of entire course, quick repetition of any critical topics based on Participants request • Course Feedback • Assessment



About Finastra

Finastra unlocks the potential of people and businesses in finance, creating a platform for open innovation. Formed in 2017 by the combination of Misys and D+H, we provide the broadest portfolio of financial services software in the world today—spanning retail banking, transaction banking, lending, and treasury and capital markets. Our solutions enable customers to deploy mission critical technology on premises or in the cloud. Our scale and geographical reach means that we can serve customers effectively, regardless of their size or geographic location—from global financial institutions, to community banks and credit unions. Through our open, secure and reliable solutions, customers are empowered to accelerate growth, optimize cost, mitigate risk and continually evolve to meet the changing needs of their customers. 90 of the world's top 100 banks use Finastra technology. Please visit finastra.com

Finastra and the Finastra 'ribbon' mark are trademarks of the Finastra group companies.
© 2019 Finastra. All rights reserved.

Corporate Headquarters

4 Kingdom Street
Paddington
London W2 6BD
United Kingdom

T: +44 20 3320 5000

